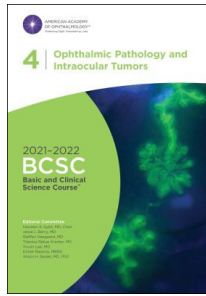


**OPHTHALMIC PATHOLOGY AND INTRAOCULAR TUMORS (Basic and Clinical Science Course 2021-2022)**



**Autor:** AAO 4 Syed

**ISBN:** 9781681044422

**Páginas:** 448

**Año:** 2021

**Edición:** 1

**Idioma:** Ingles

**Disponible:** Agotado

**Precio:** ~~205.00~~  
194.75

Iva no incluido

**DESCRIPTION:**

The Academy's Basic and Clinical Science Course is ophthalmology's definitive source of clinical information. Practicing ophthalmologists and residents worldwide use the BCSC® to ensure the highest-quality patient care. Lean on the 100+ ophthalmologists who target the most beneficial clinical updates for this key ophthalmic reference each year.

Section 4 presents materials in two parts: Part I, Ophthalmic Pathology and Part II, Intraocular Tumors.

Part I uses a hierarchy that moves from general to specific to help derive a differential diagnosis for a specific tissue.

Part II is a compilation of selected clinical aspects of importance to the general ophthalmologist - this section contains extensive updates and discussion on intraocular tumors.

Includes two interactive features that identify the disease process and cell type, expanded content on specimen handling, updated photographs and illustrations throughout and key takeaways highlighted at the beginning of each chapter.

Additionally, this section has a variety of images and videos that deepen your understanding. Print users have access to the videos.

Upon completion of Section 4, readers should be able to:

- Use a hierarchical framework of topography, disease process, and differential diagnosis to understand major ocular conditions.
- Summarize the steps for handling ocular specimens for pathologic study.
- Explain the basic principles of special procedures and diagnostic testing used in ophthalmic pathology.
- State the main histologic features of common ocular conditions.
- Identify those ophthalmic lesions that indicate systemic disease and are potentially life threatening.
- Describe the methodologies used for intraocular tumor diagnosis treatment modalities for ocular tumors and important genetic information for families affected by retinoblastoma.

**CONTENTS:****PART I Ophthalmic Pathology**

- 1 Introduction to Part I
- 2 Specimen Handling
- 3 Special Testing and Procedures in Pathology
- 4 Wound Repair
- 5 Conjunctiva
- 6 Cornea
- 7 Anterior Chamber and Trabecular Meshwork
- 8 Sclera
- 9 Lens
- 10 Vitreous
- 11 Retina and Retinal Pigment Epithelium
- 12 Uveal Tract
- 13 Eyelids
- 14 Orbit and Lacrimal Drainage System
- 15 Optic Nerve

**PART II Intraocular Tumors: Clinical Aspects**

- 16 Introduction to Part II
- 17 Melanocytic Tumors
- 18 Vascular Tumors
- 19 Retinoblastoma
- 20 Ocular Involvement in Systemic Malignancies

**LIBRERIA MEDICA BERRI 2025 ®**

Dirección: Ald. Urquijo, 35 48010 Bilbao | Tlf.: 94 444 22 85 | Fax: 94 410 07 20 | libros@berri.es | [www.berri.es](http://www.berri.es)