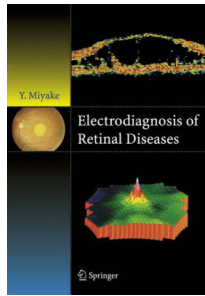


**ELECTRODIAGNOSIS OF RETINAL DISEASE**



**Autor:** Miyake

**ISBN:** 9784431254669

**Páginas:** 258

**Año:** 2006

**Edición:** 1

**Idioma:** Ingles

**Disponible:** De 2 a 3 Semanas

**Precio:** ~~211.95~~  
201.35

Iva no incluido

## **CONTENTS:**

This groundbreaking work presents techniques of electrodiagnosis and developments in electrophysiology in relation to other ocular findings as the author summarizes his extensive experience and knowledge of visual electrophysiological testing, the most definitive objective test of macular function. This book is the first to combine retinal physiology, morphology, and vitreoretinal surgery, and includes new findings in normal-macula physiology, newly discovered pathophysiological mechanisms of known diseases, and new clinical entities with unique functional properties. Also described is the correlation of macular function and macular morphology using focal macular electroretinography and optical coherence tomography obtained in surgery. This valuable resource enables researchers and clinicians to better understand the principles and methods of current techniques of visual electrophysiology and the pathophysiology of retinal diseases.

## **CONTENTS:**

### **1. Principles and Methods**

- 1.1 Full-field Electroretinograms (ERGs)
- 1.2 Electrooculogram (EOG)
- 1.3 Optical Coherence Tomography

### **2. Hereditary Retinal and Allied Diseases**

- 2.1 Retinitis Pigmentosa
- 2.2 Crystalline Retinopathy
- 2.3 Batten Disease
- 2.4 Kearns-Sayre Syndrome
- 2.5 Choroideremia
- 2.6 Gyrate Atrophy
- 2.7 Enhanced S-cone Syndrome
- 2.8 X-linked Retinoschisis
- 2.9 Nettleship-Falls X-linked Ocular Albinism
- 2.10 Complete and incomplete type CSNB
- 2.11 Fundus albipunctatus
- 2.12 Oguchi's disease
- 2.13 Cone dystrophy
- 2.14 Rod monochromacy
- 2.15 Blue cone monochromacy
- 2.16 Congenital tritanopia
- 2.17 Rod-cone dysfunction syndrome with an unusual form of ERG
- 2.18 Association of negative ERG with diseases of unknown etiology
- 2.19 Occult macular dystrophy
- 2.20 Stargardt's disease (Fundus flavimaculatus)
- 2.21 Best's disease

### **3. Acquired retinal diseases**

- 3.1 Diabetic retinopathy
- Retinal circulatory disturbances
- Retinal and choroidal detachment
- Inflammatory diseases of retina and choroid

### **4. Acquired macular diseases**

- 4.1 Central serous chorioretinopathy
- 4.2 Aphakic or pseudophakic macular
- 4.3 Idiopathic epimacular membrane (ERMs)
- 4.4 Foveal thickness and focal macular ERG
- 4.5 Idiopathic macular hole
- 4.6 Epi-macular membrane (ERM)
- 4.7 Macular pseudohole
- 4.8 Age-related macular degeneration (AMD)

**LIBRERIA MEDICA BERRI 2025 ®**

Dirección: Ald. Urquijo, 35 48010 Bilbao | Tlf.: 94 444 22 85 | Fax: 94 410 07 20 | [libros@berri.es](mailto:libros@berri.es) | [www.berri.es](http://www.berri.es)