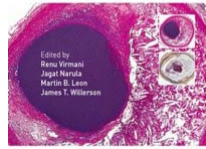


**THE VULNERABLE ATHEROSCLEROTIC PLAQUE**



The Vulnerable Atherosclerotic Plaque:  
Strategies for Diagnosis and Management



Edited by  
Renu Virmani  
Jagjit Narula  
Martin B. Leon  
James T. Willerson

Blackwell  
Futura

**Autor:** Virmani

**ISBN:** 9781405158596

**Páginas:** 384

**Año:** 2006

**Edición:** 1

**Idioma:** Ingles

**Disponible:** De 2 a 3 Semanas

**Precio:** ~~106.92~~  
101.57

Iva no incluido

**DESCRIPTION:**

Finally, a convenient, one-volume summary of current knowledge on an area of increasing importance! The Vulnerable Atherosclerotic Plaque presents contributions from the best investigators in the field, skillfully edited for easy reading and lavishly illustrated with high-quality, full-color images.

After a considered and concise introduction, the book concentrates on:

- Pathology of vulnerable plaque
- Triggers for plaque rupture
- Imaging of unstable plaque
- Management of vulnerable plaques

Careful editing allows the authors to avoid repetition and provide comprehensive coverage of pathology, detection, and management. This thorough and authoritative reference will change the way interventionists look at the disease.

**CONTENTS:****PART 1 Introduction.**

1 History of atherosclerosis and vulnerable plaque research.

**PART 2 Pathology.**

2 The pathology of vulnerable plaque.

3 Plaque rupture.

4 Plaque erosion.

5 Pathogenesis and significance of calcification in coronary atherosclerosis.

6 Adventitial and periadventitial fat inflammation and plaque vulnerability.

7 Murine models of advanced atherosclerosis.

**PART 3 Triggers for plaque rupture.**

8 Physical and mechanical stress.

9 Inflammation and matrix metalloproteinases.

10 Apoptosis in atherosclerosis.

**PART 4 Diagnosis.**

11 Emerging biomarkers of instability.

12 Ultrasonic detection of coronary disease.

13 Intravascular ultrasound for plaque characterization.

14 Magnetic resonance imaging and intravascular magnetic resonance imaging.

15 Radionuclide imaging.

16 Near-infrared spectroscopy.

17 Intravascular thermography.

18 Optical coherence tomography.

19 Intravascular palpography.

20 Coronary computed tomography for the detection of atherosclerotic plaque.

**PART 5 Management.**

21 New developments in treatment of vulnerable plaques.

22 Photodynamic therapy.

23 Thermal stabilization of vulnerable plaques.

24 An interventionalist's perspective.

25 Genetic modulation of vulnerable plaques.

**LIBRERIA MEDICA BERRI 2024 ®**

Dirección: Ald. Urquijo, 35 48010 Bilbao | Tlf.: 94 444 22 85 | Fax: 94 410 07 20 | libros@berri.es | [www.berri.es](http://www.berri.es)